

# Attention. Live lines and your safety

*Do the works safely • Know the safety clearances • Obligation to notify the authorities*



# Introduction

The Danish Safety Technology Authority has issued the regulations for electrical installations “Stærkstrømsbekendtgørelsen”.

Section 5A deals with the safety of transportation and works in the vicinity of electricity supply installations. Among these works are civil, road, and agricultural works.

*Section 5A can be obtained from the booksellers.*

The main goal of the regulations in section 5A is to avoid accidents as well as to avoid damage to electricity supply installations. In this way considerable savings for society can be obtained.

Damage to electricity supply installations often means losses in industry and inconveniences for the consumers. Further to this a risk of additional accidents in road traffic, in hospitals, and in elderly homes.

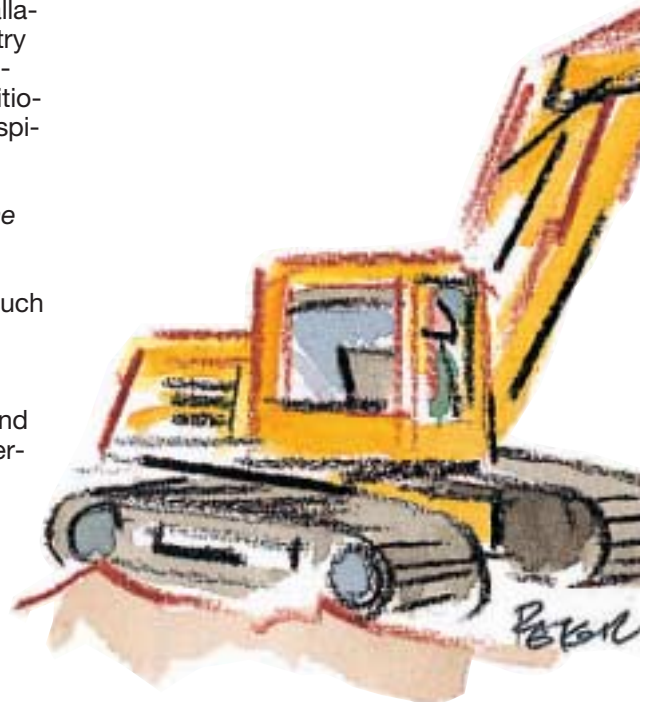
*Section 5A is not applicable for the following type of works:*

1. General agricultural activities such as ploughing, harrowing, and sowing.
2. Use of agricultural machines and driving of such underneath overhead lines:

- Provided that the height of these machines do not exceed 4 m for low tension lines and 4.5 m for high tension lines,
- Provided that these machines do not dispose of movable parts which may exceed the limitations in height or that these movable parts are locked in a low and safe position.

3. Transportation and normal traffic on roads open for the public. Here the regulations of the Road Traffic Act are valid.

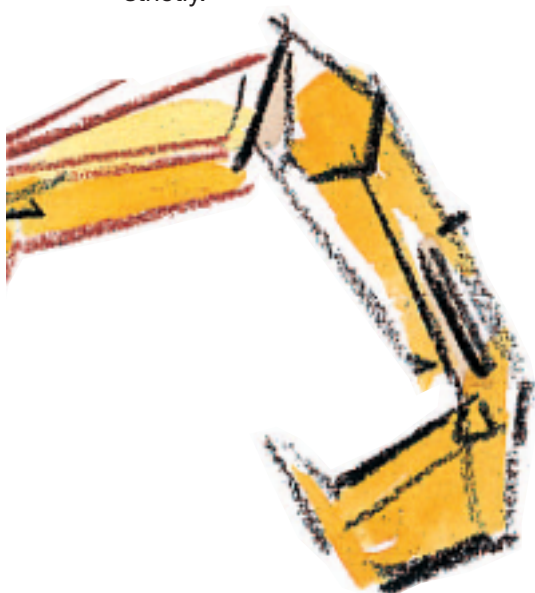
4. Works and transportation of the electricity supply company or in agreement with the supply company.



## General conditions

All works in the vicinity of electricity supply installations are submitted to the following rules:

1. Planning, instruction, and carrying out of works shall be made carefully in order to avoid damage to persons and goods.
2. Every electricity supply plant is live unless representatives of the electricity supply company declare the opposite.
3. Instructions from the electricity supply company must be followed strictly.



Handwritten signature and date: *Persey-96*

## Planning

*Section 5A rules among others:*

1. The local electricity supply company must be contacted before any work such as digging, drilling, and ramming down in street, road, or field is carried out in order to get information about the possible presence of electric cables in the working area.
2. Every person starting works or having the responsibility for works being carried out in the vicinity of overhead lines and transformer stations shall estimate whether the safety clearances can be met. If not, the local electricity supply company must be contacted in order to obtain further instructions for the works including a possible reduction of the safety clearance.

The electricity supply company will on demand either produce drawings of the cables in the working area or issue instructions at the location. It is recommended in due time to send the electricity supply company a plan showing the extent of the works.

## Note

The safety clearances mentioned in section 5A are only valid for works. The clearance between completed buildings and electricity supply installations is smaller. In the case of uncertainty, please contact the local electricity supply company.



## Instructions

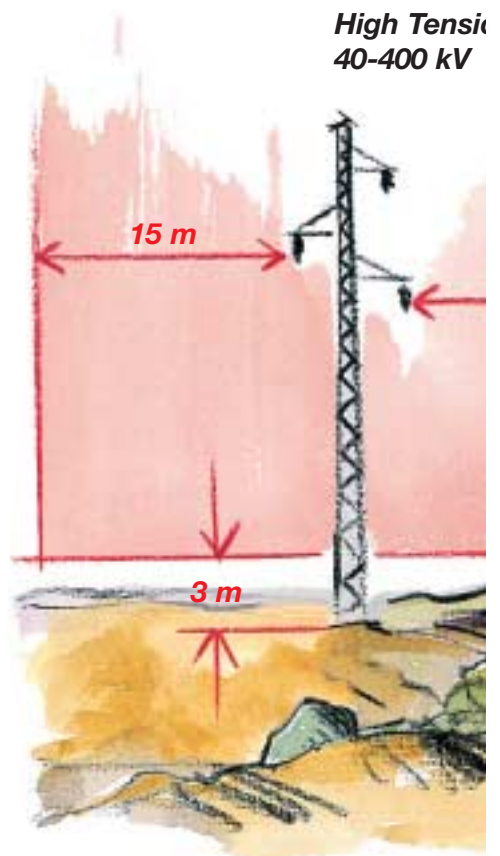
*The contractor - i.e. every person starting works or having the responsibility for works being carried out in the vicinity of electricity supply installations - shall see to it that*

1. the persons involved have been informed about the regulations in section 5A concerning the actual works,
2. all persons involved in the works have been informed about
  - the possible presence of electricity supply installations in the working and transportation area,
  - the safety clearances,
  - the possible instructions from the electricity supply company.
3. persons involved are acquainted with the local electricity supply company and its telephone number.

The contractor shall notify the electricity supply company about all incidents and accidents in relation to electricity supply installations.

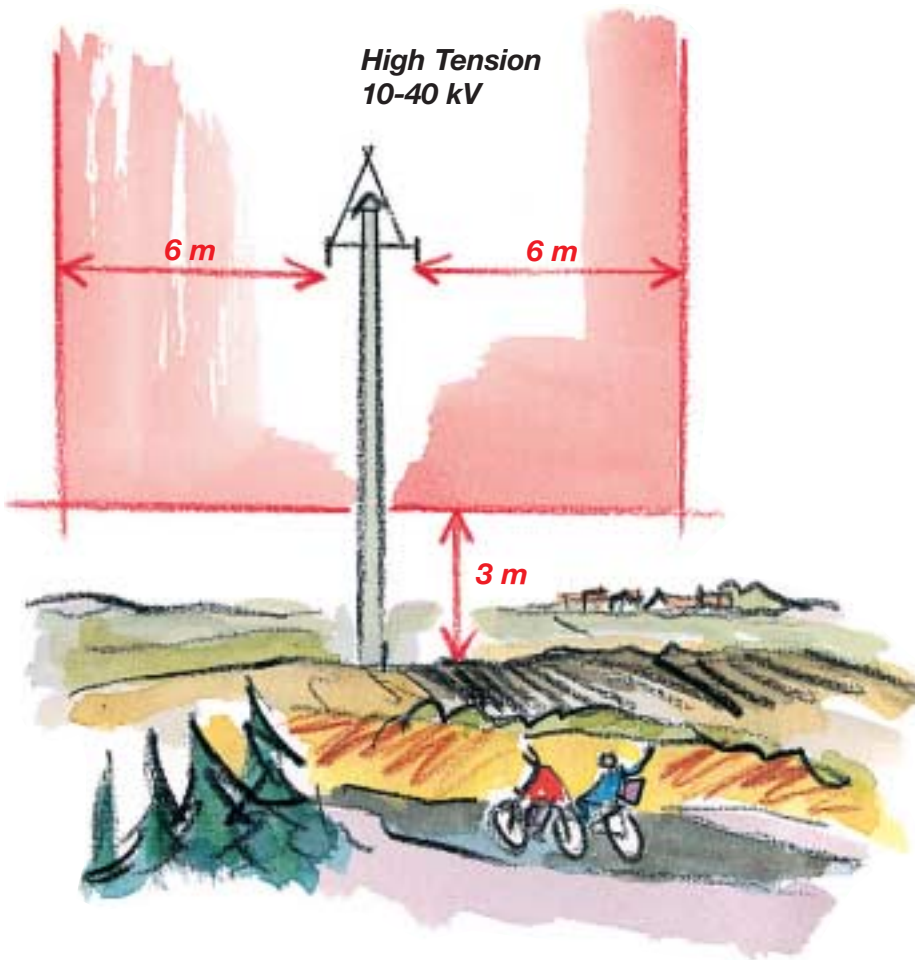
*A list of all Danish electricity supply companies with telephone numbers can be obtained by calling the trade association Dansk Energi, telephone 35 300 400, fax 35 300 401, and e-mail [de@danskeenergi.dk](mailto:de@danskeenergi.dk)*

## Safety clearances for overhead lines



HT

High Tension  
10-40 kV



The red lines on the drawing indicate the safety clearances.

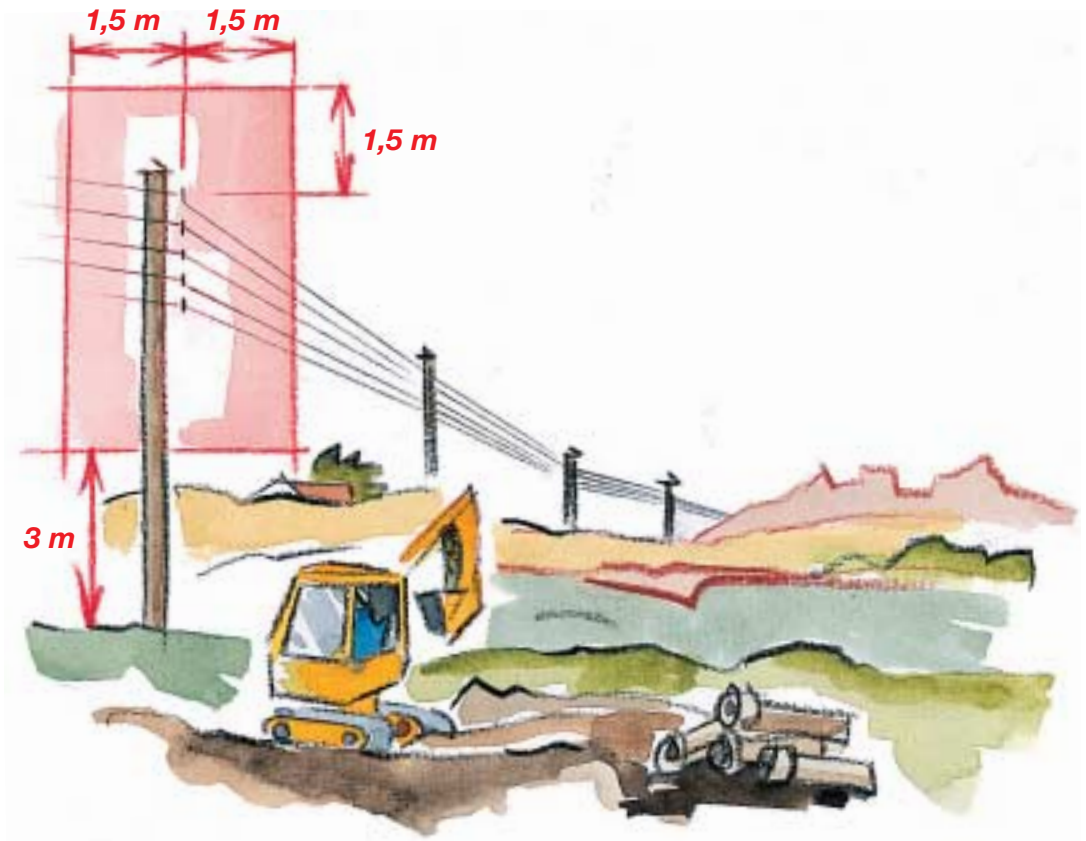
The cross section near the pole should be extended along the lines.

It is often possible to work within the area indicated provided the consent of the electricity supply company.

In the case of uncertainty, please contact the local electricity supply company.

# Safety clearances for LT overhead lines

(also valid for overhead cables)



The red lines on the drawing indicate the safety clearances in vigour.

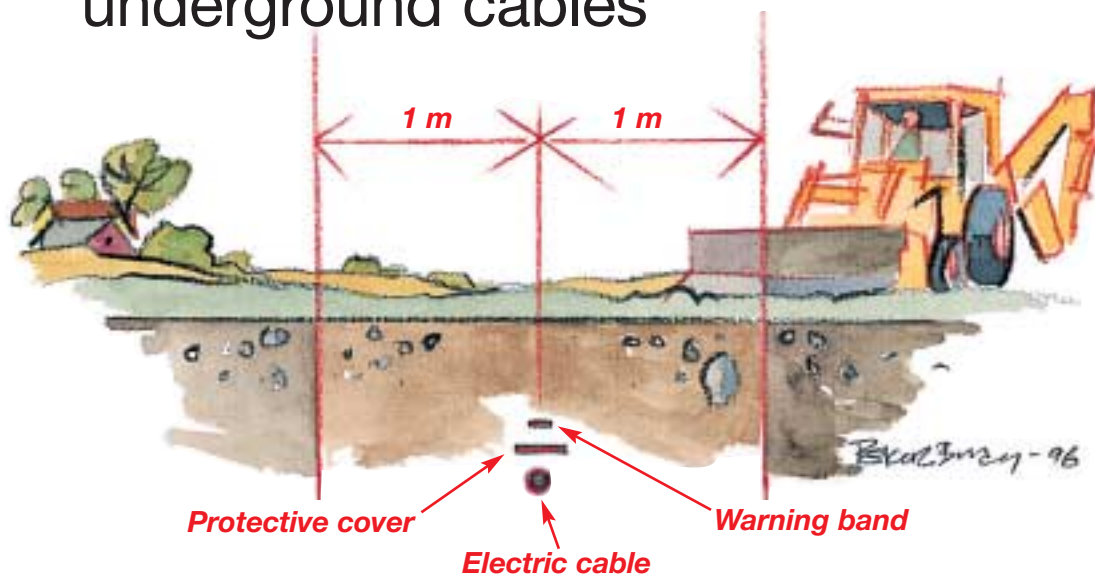
The cross section near the pole should be extended along the lines.

It is often possible to work within the area indicated provided the consent of the electricity supply company.

In the case of uncertainty, please contact the local electricity supply company.

The safety clearances are also valid for planting of trees and other large-size vegetations.

# Safety clearances for underground cables



**If you during digging find protective cover or warning bands, stop the works immediately and contact the local electricity supply company. Danger - you are within the safety clearance.**

*Procedure for digging, drilling, and ramming down works:*

1. Information about cables placed within the working shall be requested at the electricity supply company. If a permission to dig is required, contact the municipality which will ask all facility owners to show the presence of their installations.
2. All electric cables within the working area shall be identified.
3. Works within the safety clearances shall be agreed with the electricity supply company.

The red lines on the drawing indicate the safety clearances. Digging within this area is not allowed without permission from the electricity supply company.

Electric cables are normally buried in a depth from 0.35 m to 1.2 m, but changes in the surface topography may influence on the actual depth.

**Telecommunication** cables are buried in a depth varying from 40 cm to about 1 m. Many of these cables have a yellow or orange surface, while others can hardly be distinguished from electricity cables. Please note, that telecommunication cables can be live and therefore present a danger. Consequently, telecommunication cables shall be handled with the same attention as electricity supply cables.

# In case of an accident

Obligation to notify the authorities



**Electricity supply company**



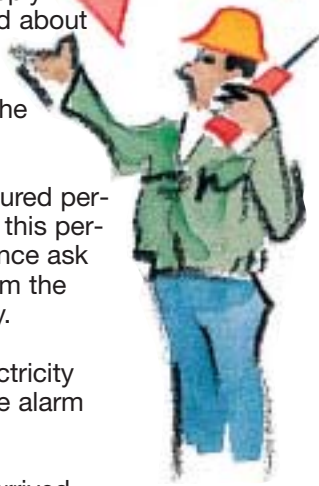
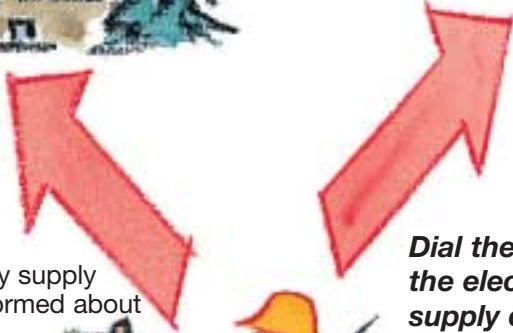
**Ambulance**

Immediately after an accident the electricity supply company shall be informed about what has happened, where it has happened, and if a disconnection of the plant involved is needed.

If you are alone with an injured person and need to stay with this person waiting for an ambulance ask people passing by to inform the electricity supply company.

Dial the number of the electricity supply company or call the alarm **112**.

Wait until assistance has arrived.



**Dial the number of the electricity supply company or call 112**

In the meantime take care that

**Nobody is within 10 m from downed HT lines,**

**Nobody is within 2 m from downed LT lines,**

**Nobody is within 5 m from damaged or cut through underground cables.**

Stamp of the electricity supply company



**NKE-ELNET**